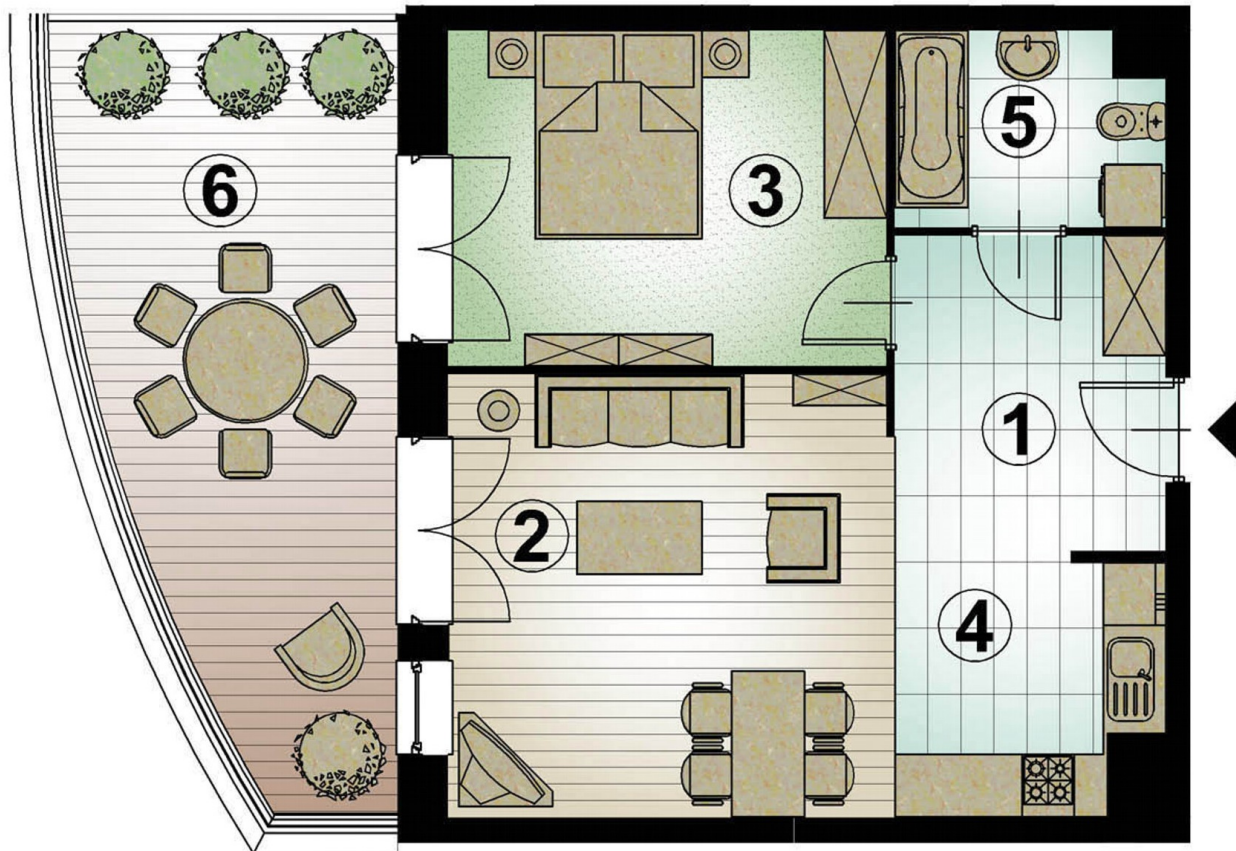
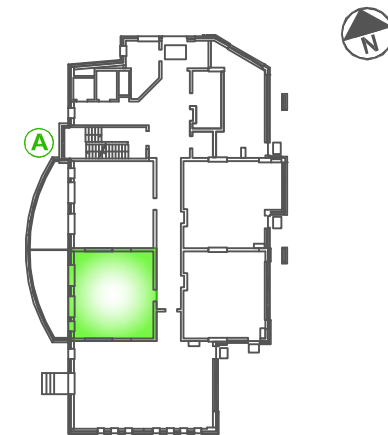
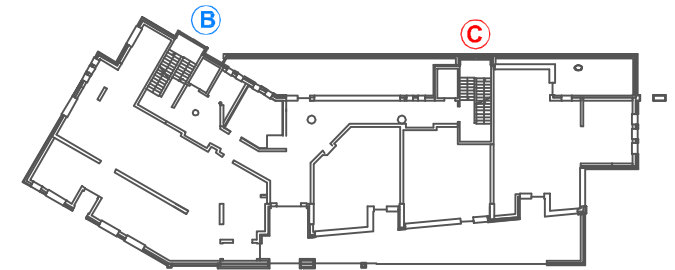




PANORAMIKA

mieszkanie 2-pokojowe 50.28 m<sup>2</sup>

parter klatka A lok. nr 1



1	przedpokój	8.00m <sup>2</sup>
2	pokój dzienny	18.12m <sup>2</sup>
3	pokój	13.56m <sup>2</sup>
4	kuchnia	5.89m <sup>2</sup>
5	łazienka	4.71m <sup>2</sup>
6	taras	19.59m <sup>2</sup>