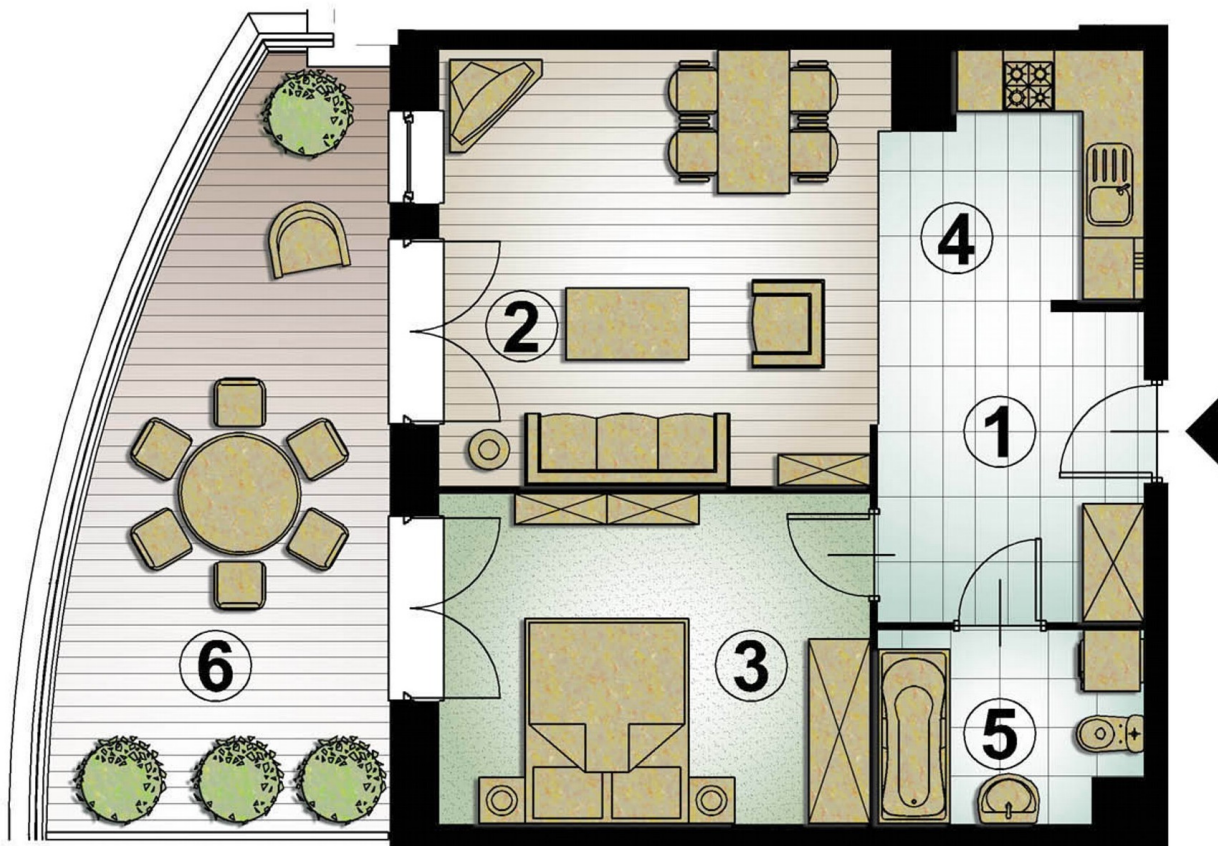
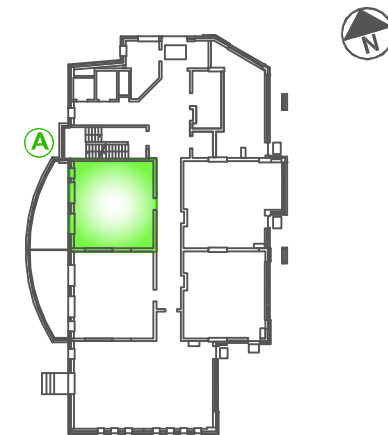
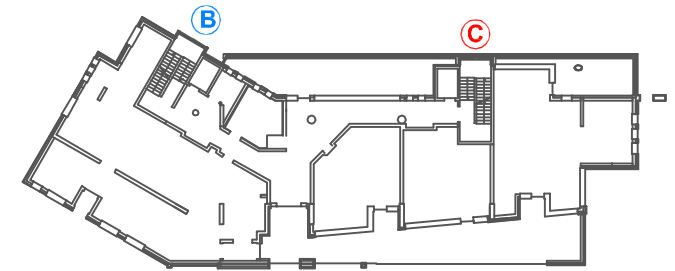




PANORAMIKA

mieszkanie 2-pokojowe 50.34 m²

parter klatka A lok. nr 2



1	przedpokój	8.06m ²
2	pokój dzienny	18.31m ²
3	pokój	13.54m ²
4	kuchnia	5.75m ²
5	łazienka	4.68m ²
6	taras	19.59m ²

